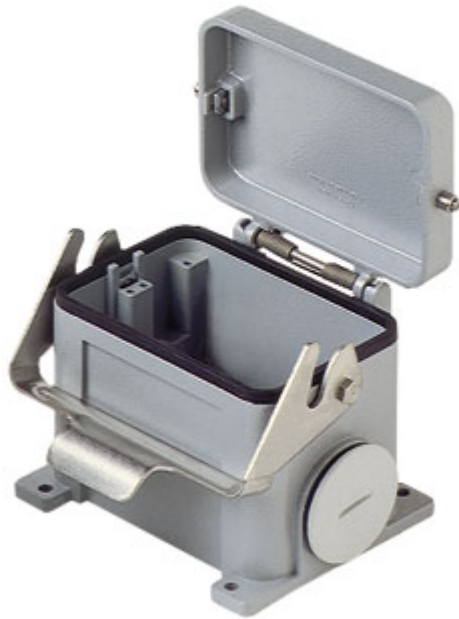


Part number

CHP 48 LS



Surface mounting housing, C-TYPE series, with 1 lever, Pg36 x 2 cable entry, size "104.62", with metal cover

Product description

Product type	Surface mounting housing
Series	C-TYPE
Closing type	With 1 lever
Size	Size 104.62
Cable entry	With cable entry Pg36 x 2
Specification	With metal cover

Technical data

IP degree of protection	IP65
--------------------------------	------

Further technical details

Weight	1.186,00 g
Operating temperature range (min, max)	-40°C...+125°C

Material properties

Other materials	Lever: Stainless steel, polyamide (PA) Gasket: NBR
Colour	RAL 7040 grey
RoHs conformity	Compliant
China RoHs - EFUP	E
REACH SVHC substances	No

Approvals / Standards

Certifications	DNV, BV
UL	ECBT2
cUL	ECBT8

General ordering information

EAN13 code	8015747023092
-------------------	---------------

Packaging Information

Packaging length	305,00 mm
Packaging height	180,00 mm
Packaging width	275,00 mm
Packaging weight	5,08 kg
Packaging volume	15,10 dm ³
Packaging description	Carton box
Packaging quantity	4 Pcs
Packaging EAN code	8015747023108
Sub-packaging weight	1,27 kg
Sub-packaging description	Plastic packaging
Sub-packaging quantity	1 Pcs
Sub-packaging EAN barcode	8015747023115

Part number

CHP 48 LS



Notes

Dimensions shown in mm are not binding and may be changed without notice.
