

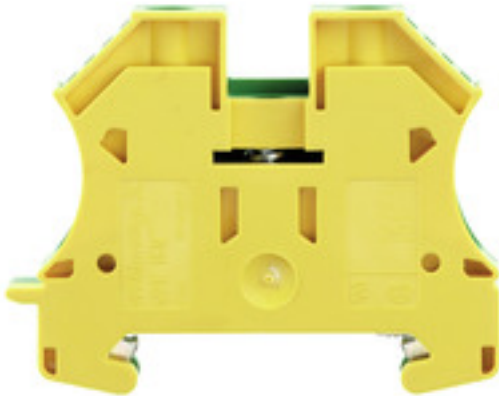
**WPE 16N****Weidmüller Interface GmbH & Co. KG**

Klingenbergstraße 26

D-32758 Detmold

Germany

www.weidmueller.com

**Product image**

A protective feed through terminal block is an electrical conductor for the purpose of safety and is used in many applications. To establish the electrical and mechanical connection between copper conductors and the mounting support plate, PE terminal blocks are used. They have one or more contact points for connection with and/or bifurcation of protective earth conductors.

**General ordering data**

|            |                                                                                                                                           |
|------------|-------------------------------------------------------------------------------------------------------------------------------------------|
| Version    | PE terminal, Screw connection, Green/yellow, 16 mm <sup>2</sup> , 690 V, Number of connections: 2, Number of levels: 1, TS 35, V-0, Wemid |
| Order No.  | <a href="#">1019100000</a>                                                                                                                |
| Type       | WPE 16N                                                                                                                                   |
| GTIN (EAN) | 4008190273248                                                                                                                             |
| Qty.       | 50 pc(s).                                                                                                                                 |

**WPE 16N****Weidmüller Interface GmbH & Co. KG**

Klingenbergstraße 26

D-32758 Detmold

Germany

www.weidmueller.com

**Technical data****Dimensions and weights**

|                          |            |                |            |
|--------------------------|------------|----------------|------------|
| Depth                    | 46.5 mm    | Depth (inches) | 1.831 inch |
| Depth including DIN rail | 47 mm      | Height         | 56 mm      |
| Height (inches)          | 2.205 inch | Width          | 12 mm      |
| Width (inches)           | 0.472 inch | Net weight     | 33.98 g    |

**Temperatures**

|                                  |                |                                  |        |
|----------------------------------|----------------|----------------------------------|--------|
| Storage temperature              | -25 °C...55 °C | Continuous operating temp., min. | -50 °C |
| Continuous operating temp., max. | 130 °C         |                                  |        |

**Material data**

|                           |       |        |              |
|---------------------------|-------|--------|--------------|
| Material                  | Wemid | Colour | Green/yellow |
| UL 94 flammability rating | V-0   |        |              |

**System specifications**

|                                     |                                                       |                               |     |
|-------------------------------------|-------------------------------------------------------|-------------------------------|-----|
| Version                             | Screw connection, With PE connection, in closed state | End cover plate required      | No  |
| Number of potentials                | 1                                                     | Number of levels              | 1   |
| Number of clamping points per level | 2                                                     | Number of potentials per tier | 1   |
| Levels cross-connected internally   | No                                                    | PE connection                 | Yes |
| Rail                                | TS 35                                                 | N-function                    | No  |
| PE function                         | Yes                                                   | PEN function                  | Yes |

**Additional technical data**

|                          |                  |                             |                 |
|--------------------------|------------------|-----------------------------|-----------------|
| Explosion-tested version | No               | Installation advice         | when screwed in |
| Interlock                | for screw fixing | Number of similar terminals | 1               |
| Open sides               | closed           | Type of mounting            | when screwed in |

**CSA rating data**

|                               |                |                               |       |
|-------------------------------|----------------|-------------------------------|-------|
| Certificate No. (CSA)         | 200039-1057876 | Wire cross section max. (CSA) | 6 AWG |
| Wire cross section min. (CSA) | 14 AWG         |                               |       |

**Conductors for clamping (additional connection)**

Connection type, additional connection Screw connection

## WPE 16N

Weidmüller Interface GmbH &amp; Co. KG

Klingenbergstraße 26

D-32758 Detmold

Germany

www.weidmueller.com

## Technical data

## Conductors for clamping (rated connection)

|                                                                                         |                     |                                                                                         |                     |
|-----------------------------------------------------------------------------------------|---------------------|-----------------------------------------------------------------------------------------|---------------------|
| Blade size                                                                              | 1.0 x 5.5 mm        | Clamping range, max.                                                                    | 25 mm <sup>2</sup>  |
| Clamping range, min.                                                                    | 1.5 mm <sup>2</sup> | Clamping screw                                                                          | M 4                 |
| Connection cross-section, stranded, max.                                                | 25 mm <sup>2</sup>  | Connection cross-section, stranded, min.                                                | 1.5 mm <sup>2</sup> |
| Connection direction                                                                    | on side             | Gauge to IEC 60947-1                                                                    | B7                  |
| Number of connections                                                                   | 2                   | Stripping length                                                                        | 12 mm               |
| Tightening torque, max.                                                                 | 2.4 Nm              | Tightening torque, min.                                                                 | 1.2 Nm              |
| Type of connection                                                                      | Screw connection    | Wire connection cross section AWG, max.                                                 | AWG 6               |
| Wire connection cross section AWG, min.                                                 | AWG 14              | Wire connection cross section, finely stranded, max.                                    | 16 mm <sup>2</sup>  |
| Wire connection cross section, finely stranded, min.                                    | 1.5 mm <sup>2</sup> | Wire connection cross-section, finely stranded with wire-end ferrules DIN 46228/1, max. | 16 mm <sup>2</sup>  |
| Wire connection cross-section, finely stranded with wire-end ferrules DIN 46228/1, min. | 1.5 mm <sup>2</sup> | Wire connection cross-section, finely stranded with wire-end ferrules DIN 46228/4, max. | 16 mm <sup>2</sup>  |
| Wire connection cross-section, finely stranded with wire-end ferrules DIN 46228/4, min. | 4 mm <sup>2</sup>   | Wire connection cross-section, solid core, max.                                         | 16 mm <sup>2</sup>  |
| Wire connection cross-section, solid core, min.                                         | 1.5 mm <sup>2</sup> |                                                                                         |                     |

## Dimensions

|              |       |
|--------------|-------|
| TS 35 offset | 32 mm |
|--------------|-------|

## General

|                                         |                 |                                         |       |
|-----------------------------------------|-----------------|-----------------------------------------|-------|
| Installation advice                     | when screwed in | Rail                                    | TS 35 |
| Standards                               | IEC 60947-7-2   | Wire connection cross section AWG, max. | AWG 6 |
| Wire connection cross section AWG, min. | AWG 14          |                                         |       |

## PE rating data

|                                          |                              |                              |     |
|------------------------------------------|------------------------------|------------------------------|-----|
| Rated short-time current                 | 1920 A (16 mm <sup>2</sup> ) | Centre screw on PE terminals | M 3 |
| Tightening torque range for fixing screw | 0.5...1.0 Nm                 | PEN function                 | Yes |

## Rating data

|                                              |                    |                                                      |               |
|----------------------------------------------|--------------------|------------------------------------------------------|---------------|
| Rated cross-section                          | 16 mm <sup>2</sup> | Rated voltage to adjoining terminal                  | 690 V         |
| Rated DC voltage                             | 690 V              | Standards                                            | IEC 60947-7-2 |
| Volume resistance according to IEC 60947-7-x | 0.42 mΩ            | Rated impulse withstand voltage to adjacent terminal | 6 kV          |
| Power loss in accordance with IEC 60947-7-x  | 2.43 W             | Pollution severity                                   | 3             |

## UL rating data

|                                         |        |                                         |       |
|-----------------------------------------|--------|-----------------------------------------|-------|
| Certificate No. (UR)                    | E60693 | Conductor size Factory wiring max. (UR) | 6 AWG |
| Conductor size Factory wiring min. (UR) | 14 AWG | Conductor size Field wiring max. (UR)   | 6 AWG |
| Conductor size Field wiring min. (UR)   | 14 AWG |                                         |       |

## WPE 16N

Weidmüller Interface GmbH &amp; Co. KG

Klingenbergstraße 26

D-32758 Detmold

Germany

www.weidmueller.com

## Technical data

## Classifications

|             |             |             |             |
|-------------|-------------|-------------|-------------|
| ETIM 6.0    | EC000901    | ETIM 7.0    | EC000901    |
| ETIM 8.0    | EC000901    | ETIM 9.0    | EC000901    |
| ECLASS 9.0  | 27-14-11-41 | ECLASS 9.1  | 27-14-11-41 |
| ECLASS 10.0 | 27-14-11-41 | ECLASS 11.0 | 27-14-11-41 |
| ECLASS 12.0 | 27-14-11-41 | ECLASS 13.0 | 27-25-01-03 |
| ECLASS 14.0 | 27-25-01-03 |             |             |

## Environmental Product Compliance

|                        |                             |
|------------------------|-----------------------------|
| REACH SVHC             | /                           |
| RoHS Compliance Status | Compliant without exemption |

## Approvals

Approvals



|                       |            |
|-----------------------|------------|
| ROHS                  | Conform    |
| UL File Number Search | UL Website |
| Certificate No. (UR)  | E60693     |

## Downloads

|                                             |                                                                                                                                                                |
|---------------------------------------------|----------------------------------------------------------------------------------------------------------------------------------------------------------------|
| Approval/Certificate/Document of Conformity | <a href="#">CE Declaration of Conformity</a><br><a href="#">UKCA declaration of conformity</a><br><a href="#">Confirmation of Standards EN 45545-2_2020-10</a> |
| Engineering Data                            | <a href="#">CAD data – STEP</a>                                                                                                                                |
| User Documentation                          | <a href="#">StorageConditionsTerminalBlocks</a><br><a href="#">Instruction</a>                                                                                 |
| Catalogues                                  | <a href="#">Catalogues in PDF-format</a>                                                                                                                       |
| Brochures                                   |                                                                                                                                                                |

**Data sheet**

**WPE 16N**

**Weidmüller Interface GmbH & Co. KG**  
Klingenbergstraße 26  
D-32758 Detmold  
Germany

[www.weidmueller.com](http://www.weidmueller.com)

**Drawings**

