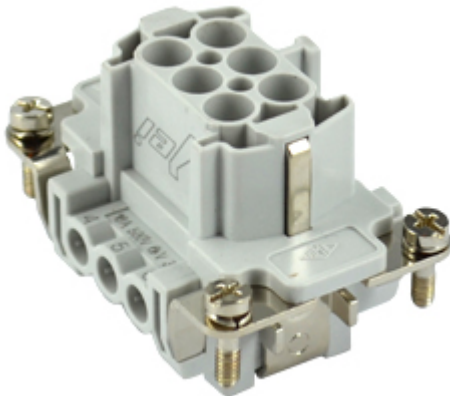




Part number

JNEF 06



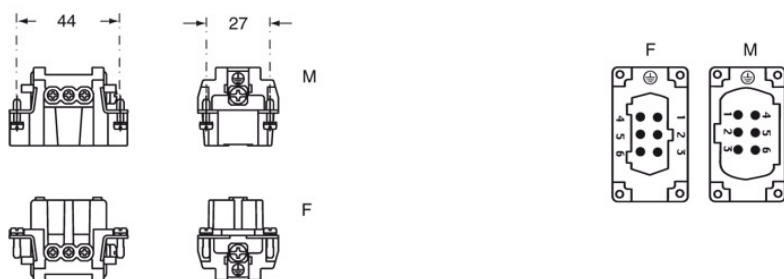
Product description		Approvals / Standards	
Model	female insert	Reference standard	EN 61984 (2001-11)
Version	screw terminal connections	Quality mark	 EAC
Series	JNE	Conformity	CQC, CE
Product type	with female contacts	General ordering information	
Variant	with plate	EAN13 code	8015747204378
Family	JEI inserts	Tariff number	85369095
Size	size "44.27"	Packaging Information	
N. of poles	6 poles + 	Packaging length	220,00 mm
Technical data		Packaging height	210,00 mm
Current	16 A (D.C.)	Packaging width	230,00 mm
Voltage	500 V	Packaging weight	5,27 kg
Rated impulse withstand voltage	6kV	Packaging volume	10,63 dm ³
Pollution degree	3	Packaging description	Carton box
Frequency	d.c.	Packaging quantity	100 Pcs
Wire cross-section	0,50 mm ² - 4,00 mm ²	Packaging EAN code	8015747204491
AWG size	20 - 12	Sub-packaging weight	0,53 kg
Operating temperature range (min, max)	-40°C ... +125°C	Sub-packaging description	Carton
Contact type	tin plated	Sub-packaging quantity	10 Pcs
Mating cycles	≥ 200	Sub-packaging EAN barcode	8015747204507
IP degree of protection	IP20 without enclosure; IP65/IP66/IP67/IP68 with enclosure		
PE wire cross-section	0,14 - 4 mm ² ; AWG 20 - 12		
Further technical details			
Characteristics according to EN 61984	16A 500V 6kV 3; 16A 400/690V 6kV 2		
Insulation resistance	≥ 10 GΩ		
Rated voltage according to UL/CSA	600V		
UL 94 flammability rating	V-0		
Weight	56,00 g		

Part number

JNEF 06



Catalogue drawings



Notes

- for non-prepared conductors
- inserts with plate for section conductors:
0.5 ÷ 4 mm² - AWG 20 ÷ 12
- conductors stripping length: 7 mm
- terminal screw torque: 0.5 Nm

